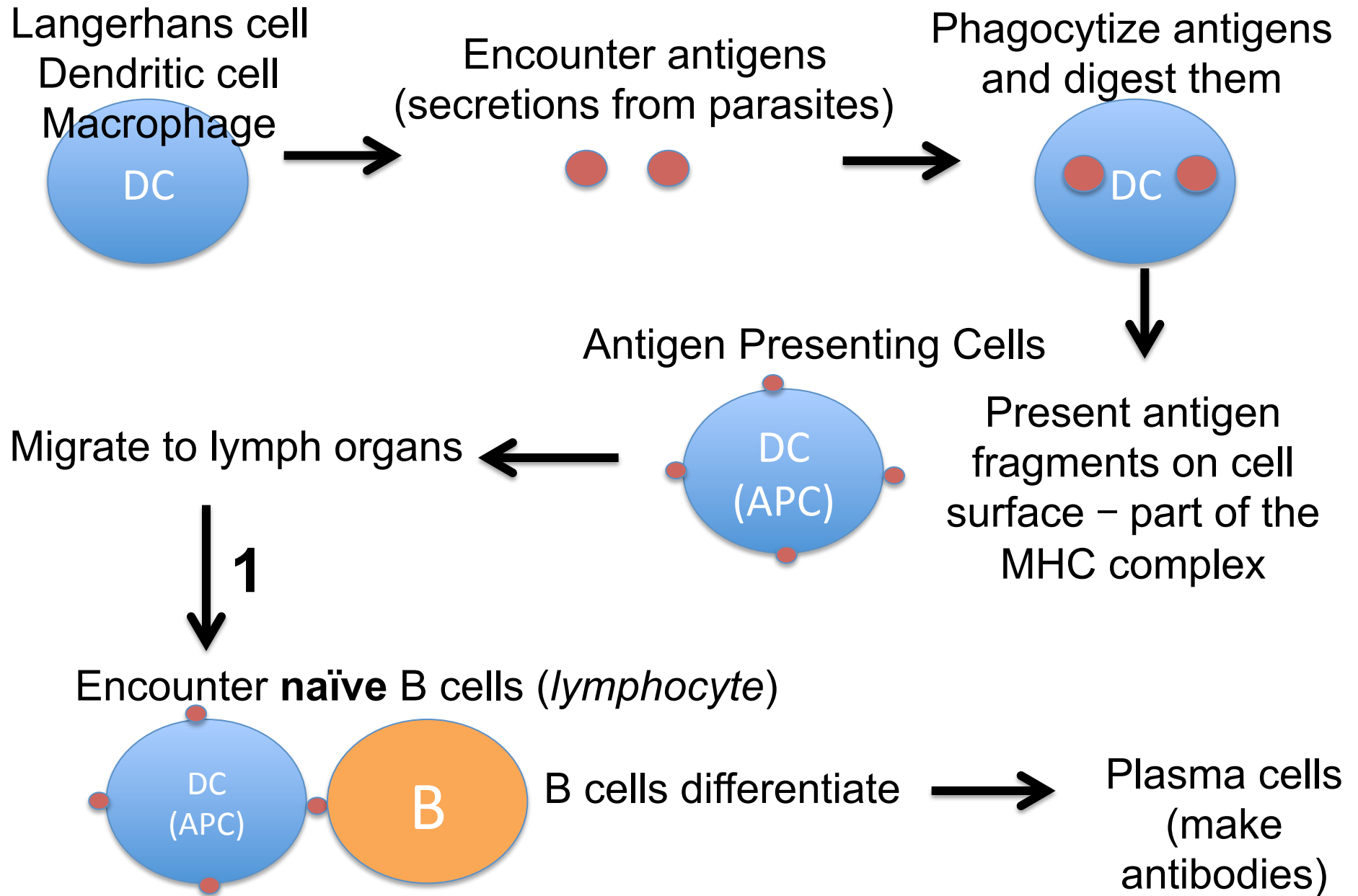


Notes on Antigen Presenting Cells from lecture on 1-29-19

In the following slides, you will see that 3 types of cells can become antigen presenting cells – those antigen presenting cells can then encounter two types of cells to have different effects

Pathway 1

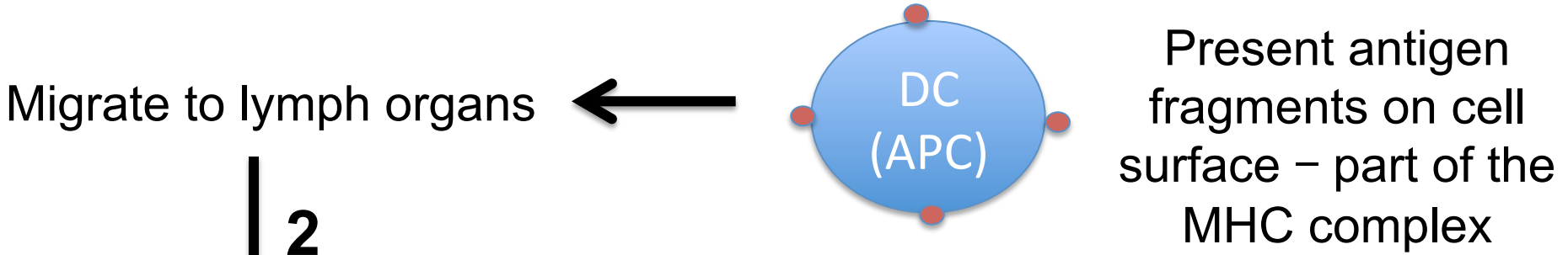
Antigen Presenting Cells (Adaptive Immunity)



Pathway 2

The previous pathway whereby 3 types of cells phagocytize antigens happens here as well and leads to...

Antigen Presenting Cells



↓ 2

Encounter **Ag-experienced B cells**

Ag = antigen

A form of B cell that has encountered an Ag but not become a plasma cell

